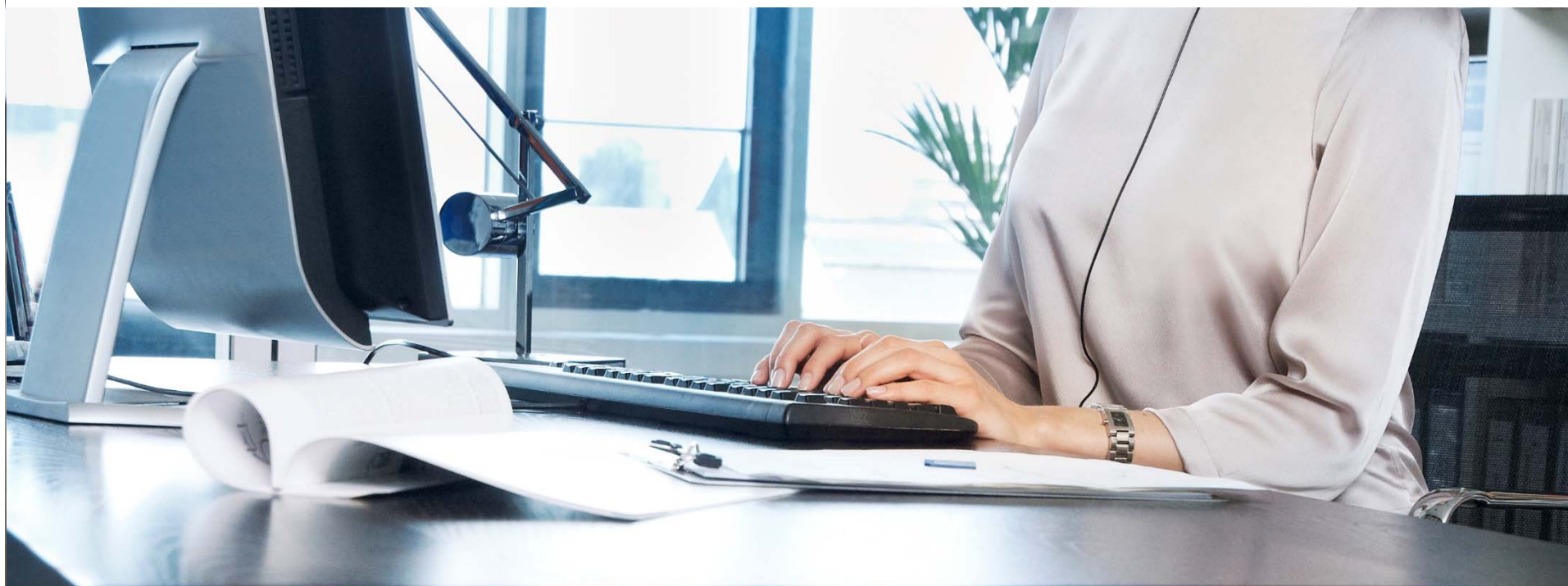


OLYMPUS

Your Vision, Our Future



RS-28H & RS-31H

USB Foot Switches for PC/Mac

Olympus Imaging Australia Pty Ltd.

December 2015

Current Footswitch Models

Olympus have been producing USB foot switches for transcription purposes for many years. However, for a user to operate the foot switch to control playback, dedicated Olympus audio or transcription software was required.



New RS-28H & RS-31H Foot Switches

Introducing the new RS-28H & RS-31H USB Foot Switches with USB Keyboard Mode.

Unlike the previous models, the new RS28H & RS-31H can also be used with third-party applications in both Windows and Mac environments. This is thanks to the footswitch including support for keyboard commands or shortcuts which can be set using a dedicated configuration tool.

By assigning keyboard commands or shortcuts to the new foot switches, you are able to control third-party applications hands-free.

Using the dedicated footswitch configuration tool, you can change the operational mode of the foot switch to Keyboard Mode, and assign specific commands and shortcuts to any of the footswitch pedals.



Target Users

- Typists with Third Party Transcription software (non-Olympus).
- A user who wishes to use a foot switch to execute commands in any Third Party application where they would like to have their hands free.
- A user that wishes to assign a combination of keyboard commands (macros) or Special Commands to a pedal as it is more convenient, or they are unable to press multiple buttons together.
- Existing Olympus transcription users can also use this new foot switch with their existing Olympus software.

OLYMPUS

Your Vision, Our Future



Key Features

Key Features



Compatibility with Various Applications

Thanks to the RS-28H & RS-31H's ability to be used in Keyboard Mode, the new footswitch can be used not only with Olympus applications, but any third party application that supports keyboard shortcuts.

Example of applications:

Multimedia



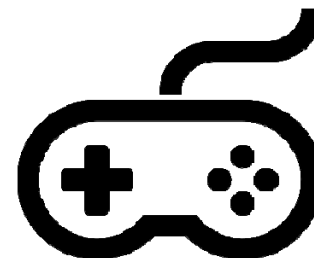
Word Processing / Document Management



Photo Capture / Editing / Manipulation

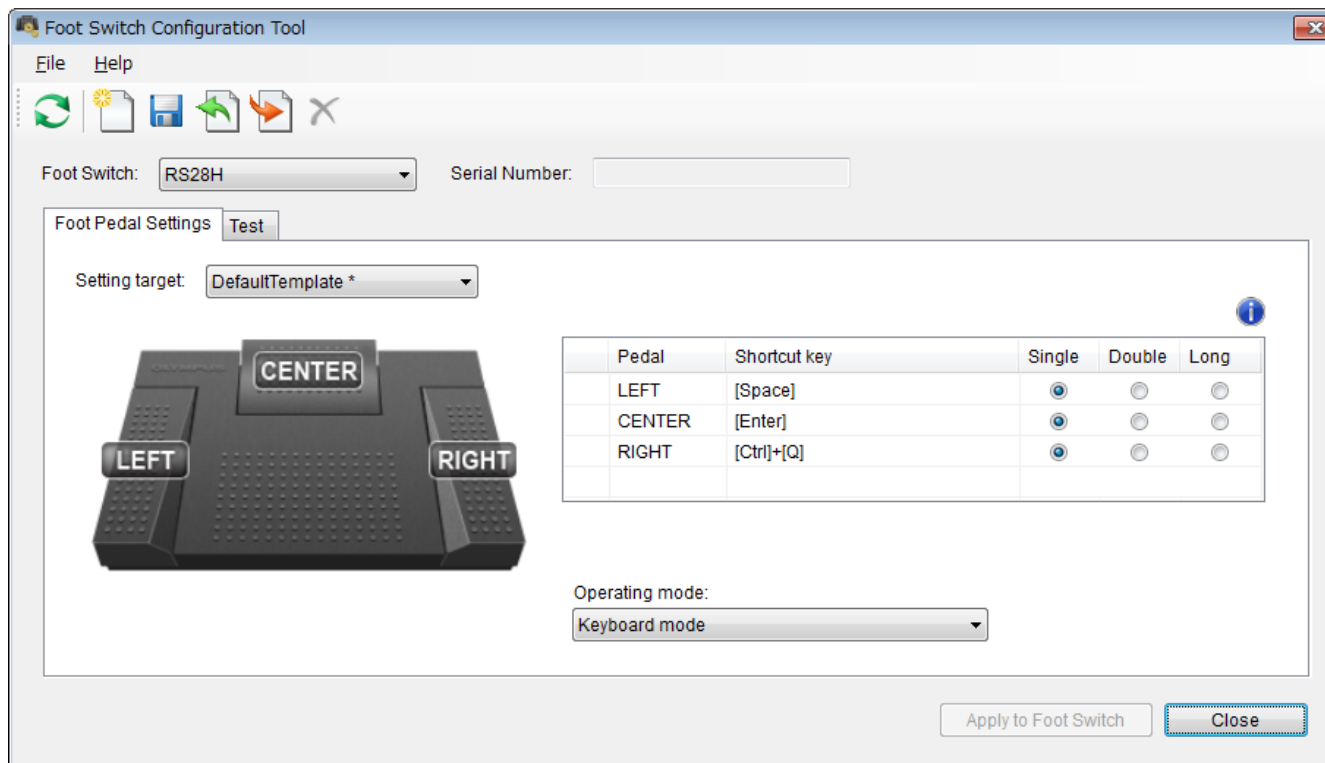


Computer Gaming



Easy keyboard assignment with the Foot Switch Configuration Tool

Keyboard commands can be assigned using the Foot Switch Configuration Tool. This lightweight application does not require installation, and is extremely easy to use. Configuring a foot switch is straightforward, even for first time users, thanks to the simple interface design.



High Quality & Reliability

Olympus has over 50 years experience in designing and manufacturing dictation and transcription equipment for business use.

Thanks to this expertise, the new RS-28H & RS-31H Foot Switches have robust and high quality design, specialised for hours of comfortable use.

The foot switch incorporates 3 buttons (RS-28H) or 4 buttons (RS-31H) which can control not only your Olympus software, but any third party application. Featuring an extremely durable and long 1.8M USB Cable, the foot switches are ergonomically designed to suits shoe sizes up to 45 (EUR).

There is also a non-slip mat on the base to ensure that the foot switch is firmly held in place during use.



RS-28H



RS-31H

OLYMPUS

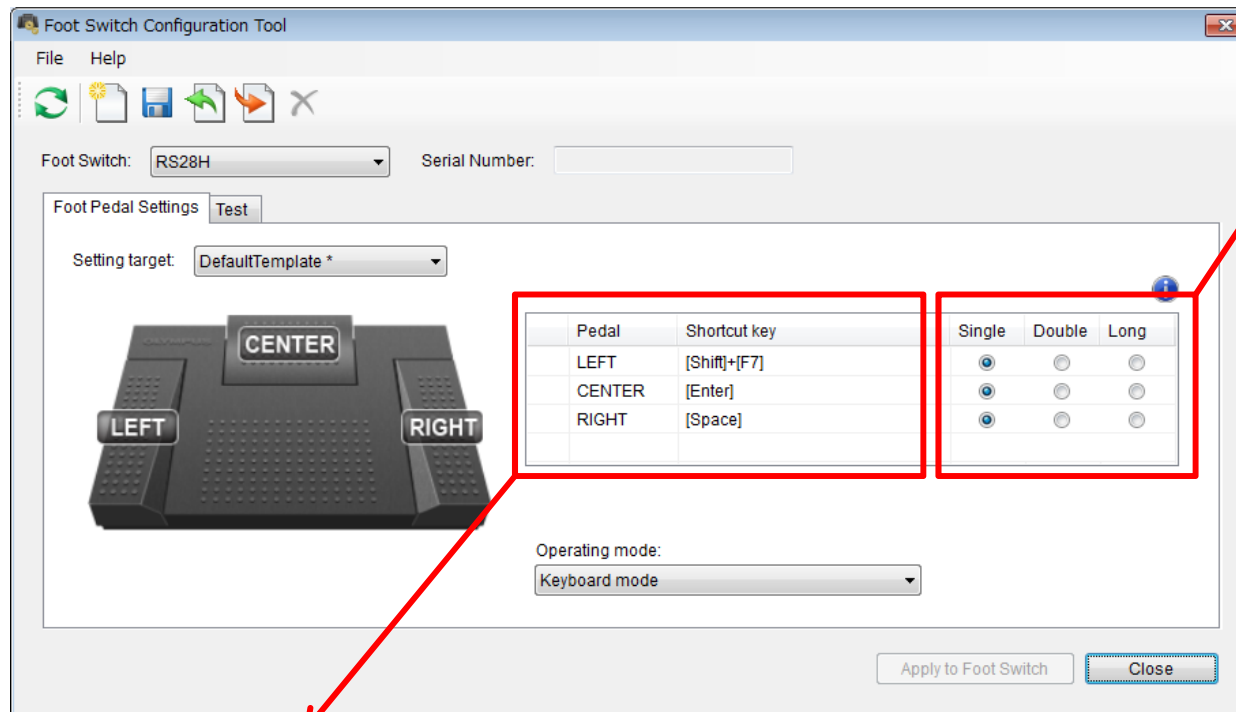
Your Vision, Our Future



Use Example

Olympus Foot Switch Configuration Tool

- Available for free download from the Olympus website.
- Simple executable type application (No installation needed!).
- Connect your foot switch, and open the Tool to configure.



Set the behaviour of the pedal when it is pressed.

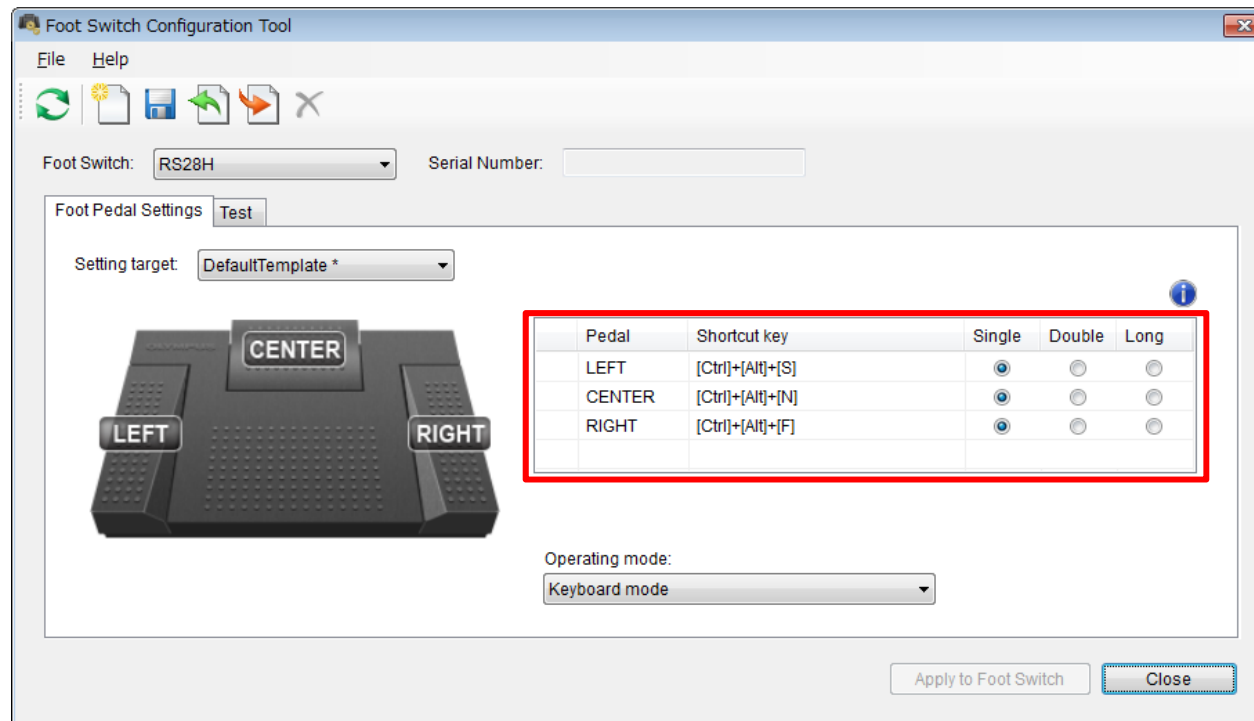
Single:
Press
Double:
Press/Release
Long:
Press/Hold

Select the existing Shortcut key, and press the keyboard key/s you like to assign it to the pedal.

With Windows Media Player

Commands are assigned as follows:

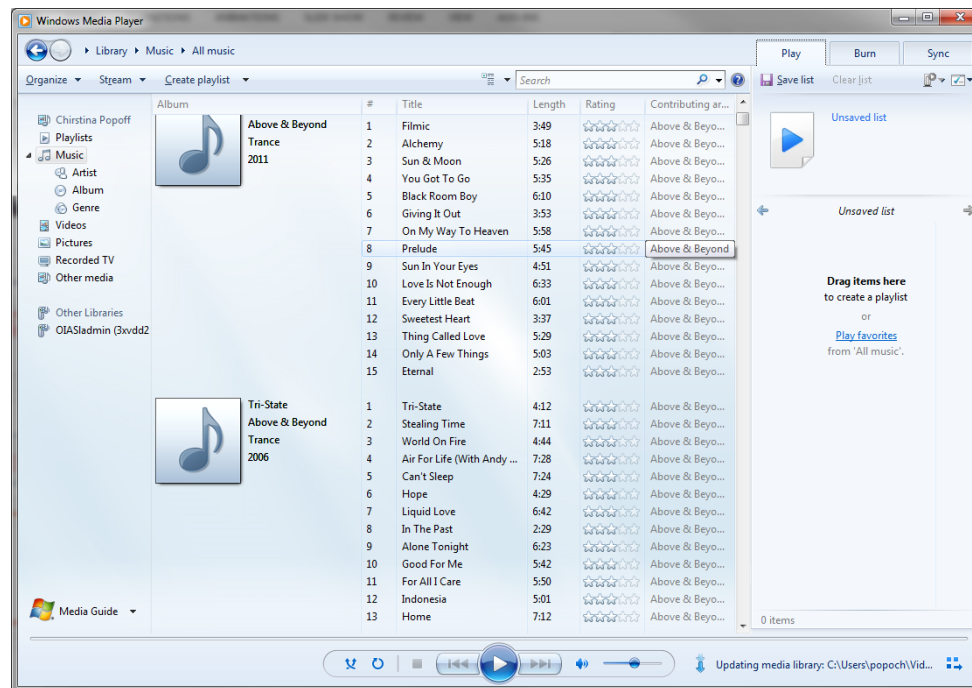
Left Pedal: [Ctrl]+[Alt]+[S]
Centre Pedal: [Ctrl]+[Alt]+[N]
Right Pedal: [Ctrl]+Alt]+[F]



With Windows Media Player

Pedal function in application:

Left Pedal: Slow Playback
 Centre Pedal: Normal Playback
 Right Pedal: Fast Playback



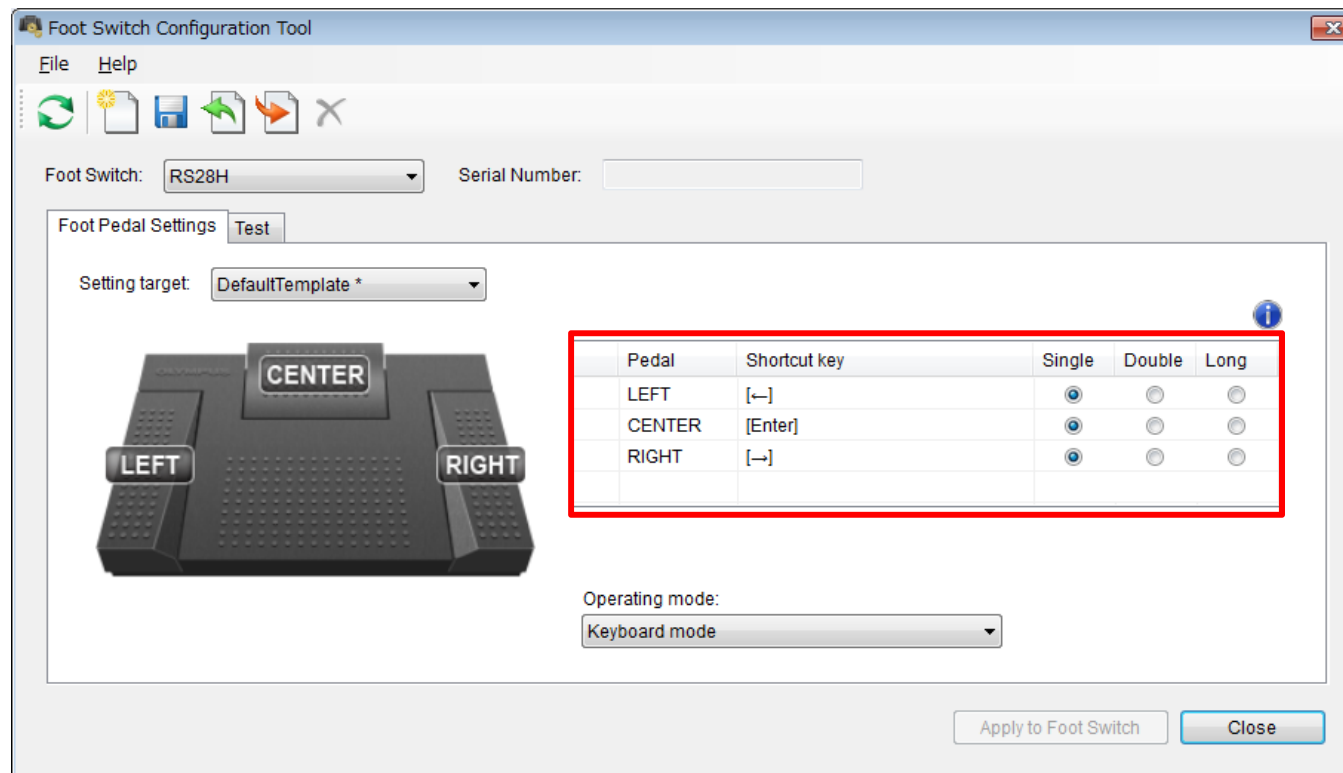
With Microsoft Excel

Commands are assigned as follows:

Left Pedal: [←]

Centre Pedal: [Enter]

Right Pedal: [→]



With Microsoft Excel

Pedal function in application:

- Left Pedal: Move to the left cell
- Centre Pedal: 'Enter' command / next line
- Right Pedal: Move to the right cell

	A	B	C	D	E	F
1	Student Name	Gender	Class Level	Home State	Major	Extracurricular Ac
2	Alexandra	Female	4. Senior	CA	English	Drama Club
3	Andrew	Male	1. Freshman	SD	Math	Lacrosse
4	Anna	Female	1. Freshman	NC	English	Basketball
5	Becky	Female	2. Sophomore	SD	Art	Baseball
6	Benjamin	Male	4. Senior	WI	English	Basketball
7	Carl	Male	3. Junior	MD	Art	Debate
8	Carrie	Female	3. Junior	NE	English	Track & Field
9	Dorothy	Female	4. Senior	MD	Math	Lacrosse
10	Dylan	Male	1. Freshman	MA	Math	Baseball
11	Edward	Male	3. Junior	FL	English	Drama Club
12	Ellen	Female	1. Freshman	WI	Physics	Drama Club

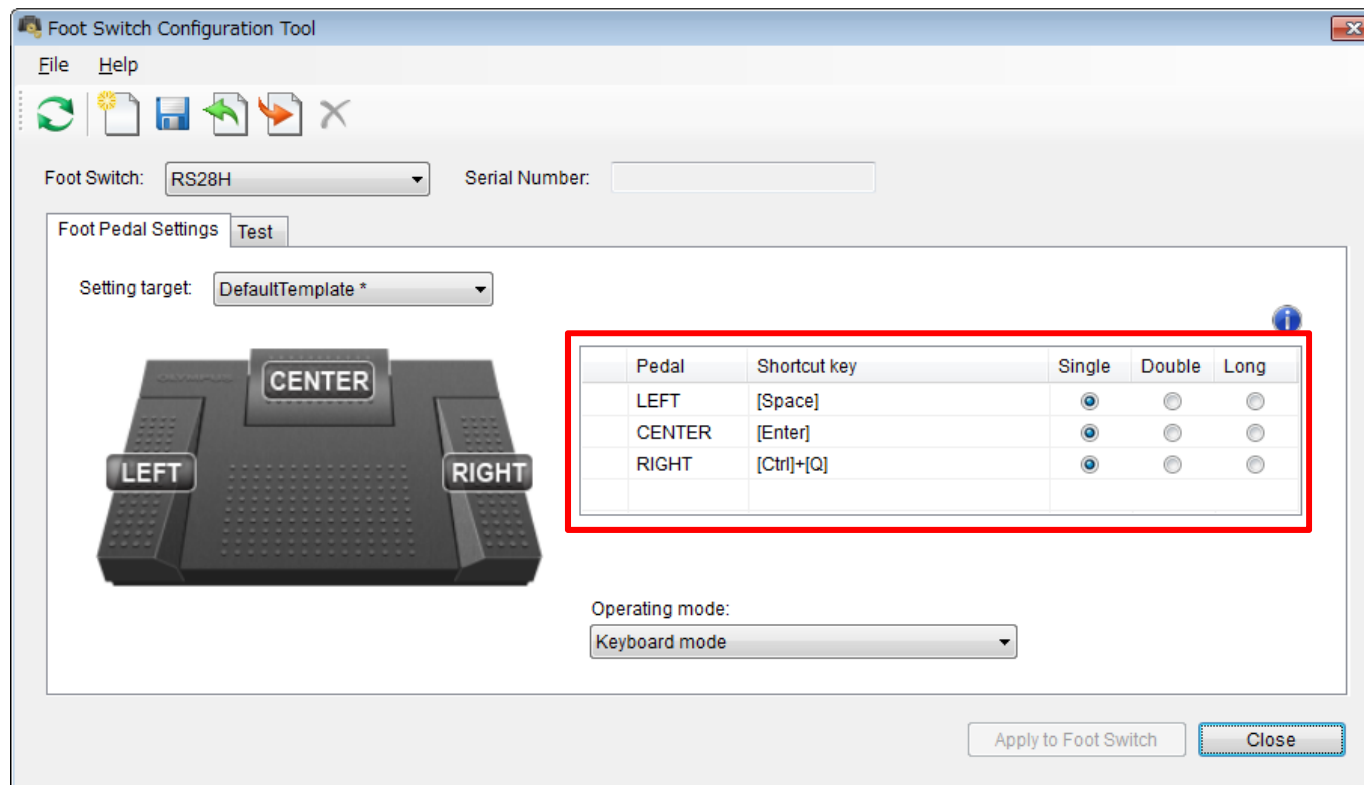


With Olympus Capture

Commands are assigned as follows:

Left Pedal: [Space]
Centre Pedal: [Enter]
Right Pedal: [Ctrl] + [Q]

NB: Olympus Capture is an application that can control Olympus cameras while they are tethered to the computer



With Olympus Capture

Pedal function in application:

Left Pedal:	Lock Focus
Centre Pedal:	Release Shutter
Right Pedal:	Exit Application

NB: Olympus Capture is an application that can control Olympus cameras while they are tethered to the computer



Other potential application use

With Microsoft PowerPoint:

Initiate Slide show playback / Next Slide / Previous Slide etc.



With Adobe Photoshop:

Auto Levels function / Cloning Tool / Healing Tool etc.



With Computer games (e.g. First Person Shooters):

Shoot / Reload / Strafe Left / Strafe Right etc.



OLYMPUS
